



MONTHLY MEMBERSHIP PROGRESS REPORT

District 27 B1

Results as of: 6/30/2017

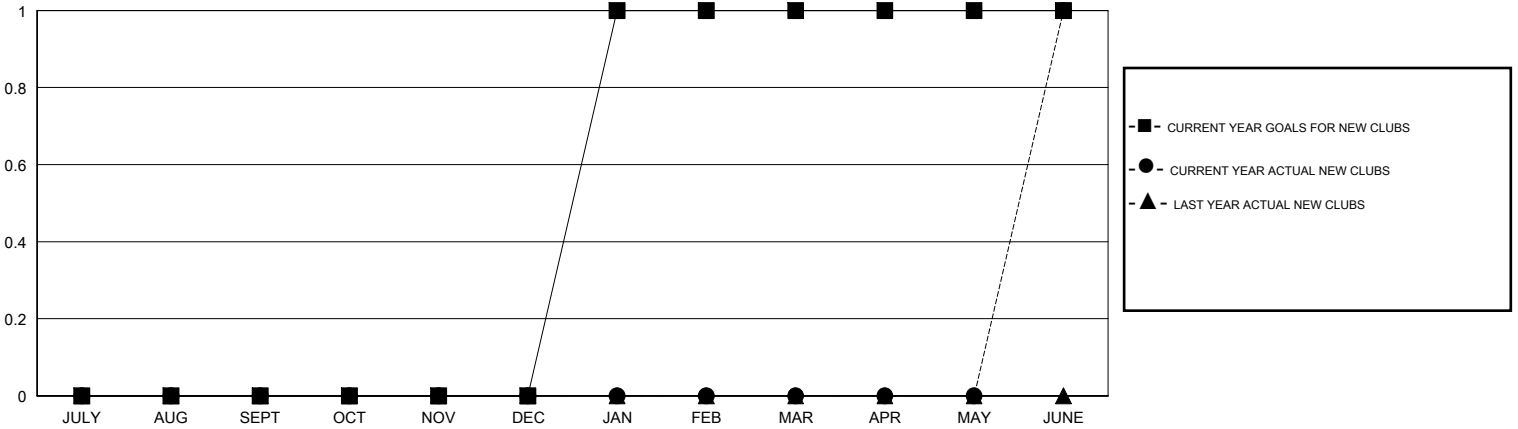
GMT: OPEN

LOCATION WISCONSIN

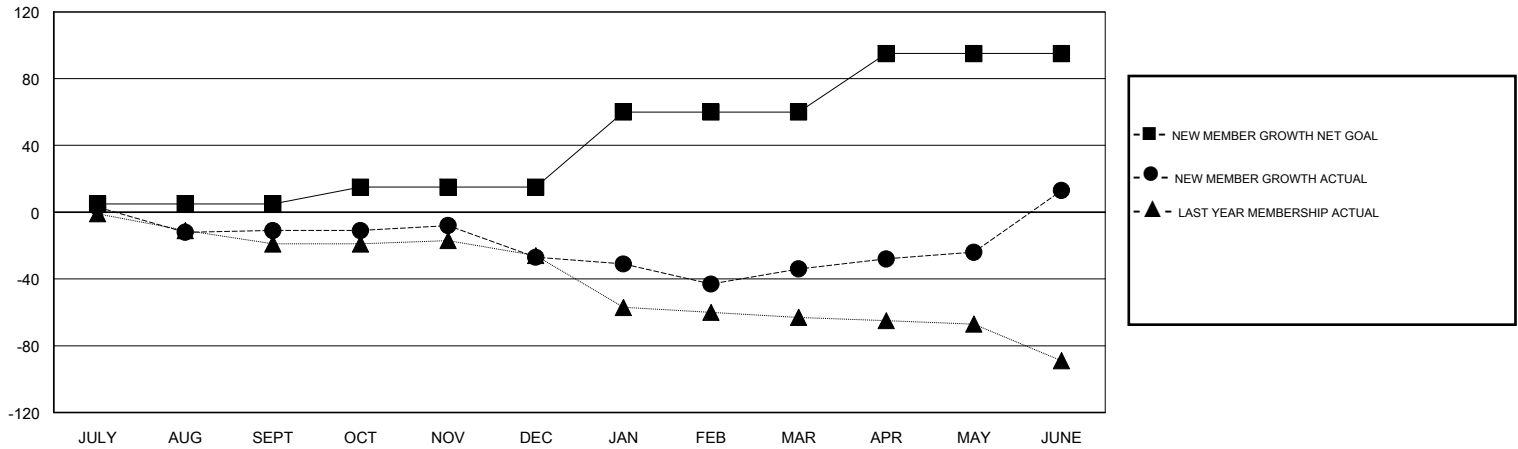
GMT CA

Clubs				Members			
RESULTS FOR 2016-2017				RESULTS FOR 2016-2017			
QUARTER	NEW CLUB GOAL	NEW CLUBS	DROPPED CLUBS	QUARTER	NEW MEMBER GROWTH NET GOAL (not reinstated or transfers)	NEW MEMBER GROWTH ACTUAL (not reinstated or transfers)	DROPPED MEMBERS ACTUAL (including transfers)
JULY/AUG/SEPT	0	0	0	JULY/AUG/SEPT	5	43	54
OCT/NOV/DEC	0	0	1	OCT/NOV/DEC	10	44	60
JAN/FEB/MAR	1	0	1	JAN/FEB/MAR	45	42	49
APR/MAY/JUNE	0	1	0	APR/MAY/JUNE	35	99	52

GOALS AND ACTUAL NEW CLUBS CUMULATIVE



GOALS AND ACTUAL MEMBERS CUMULATIVE



DROPPED CLUBS: 2	55 CLUBS OF 71 ADDED 1 OR MORE NEW MEMBERS	GENDER DISTRIBUTION
		MALE 1,589 (79.09%)
		FEMALE 420 (20.91%)
DROPPED MEMBERS	CLICK HERE FOR CUMULATIVE MEMBERSHIP DATA	TOTAL FAMILY UNIT MEMBERS 333
DECEASED 39		FAMILY MEMBERS PAYING HALF DUES 169
CLUB CANCELLED 0		
OTHER 176		
TOTAL 215		